

THESE DOCUMENTS ARE PREPARED UNDER THE DIRECT SUPERVISION OF ALLIED ARCHITECTS AND ENGINEERS, INC. (AAE) AND ARE THE PROPERTY OF AAE. NO PART OF THESE DOCUMENTS ARE TO BE REPRODUCED OR TRANSMITTED IN ANY FORM OR BY ANY MEANS, ELECTRONIC OR MECHANICAL, INCLUDING PHOTOCOPYING, RECORDING, OR BY ANY INFORMATION STORAGE AND RETRIEVAL SYSTEM, WITHOUT THE WRITTEN PERMISSION OF AAE. ANY UNLAWFUL REPRODUCTION OR TRANSMISSION OF THESE DOCUMENTS IS STRICTLY PROHIBITED.

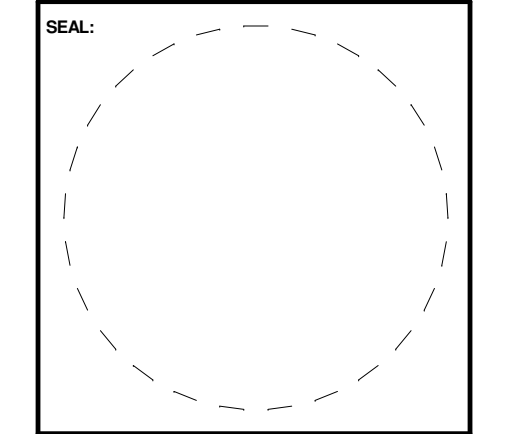


ASHLEY MCGRAW

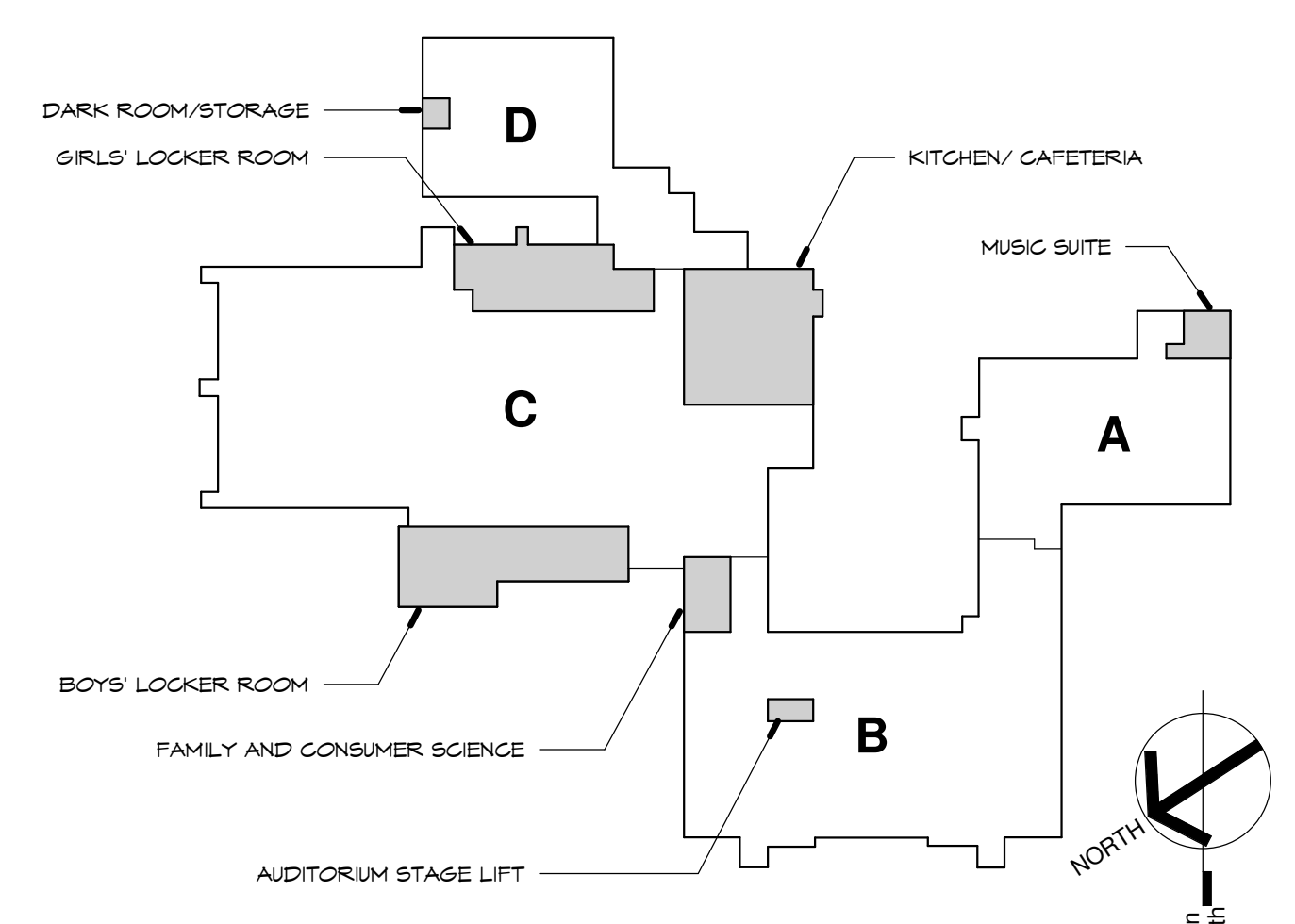
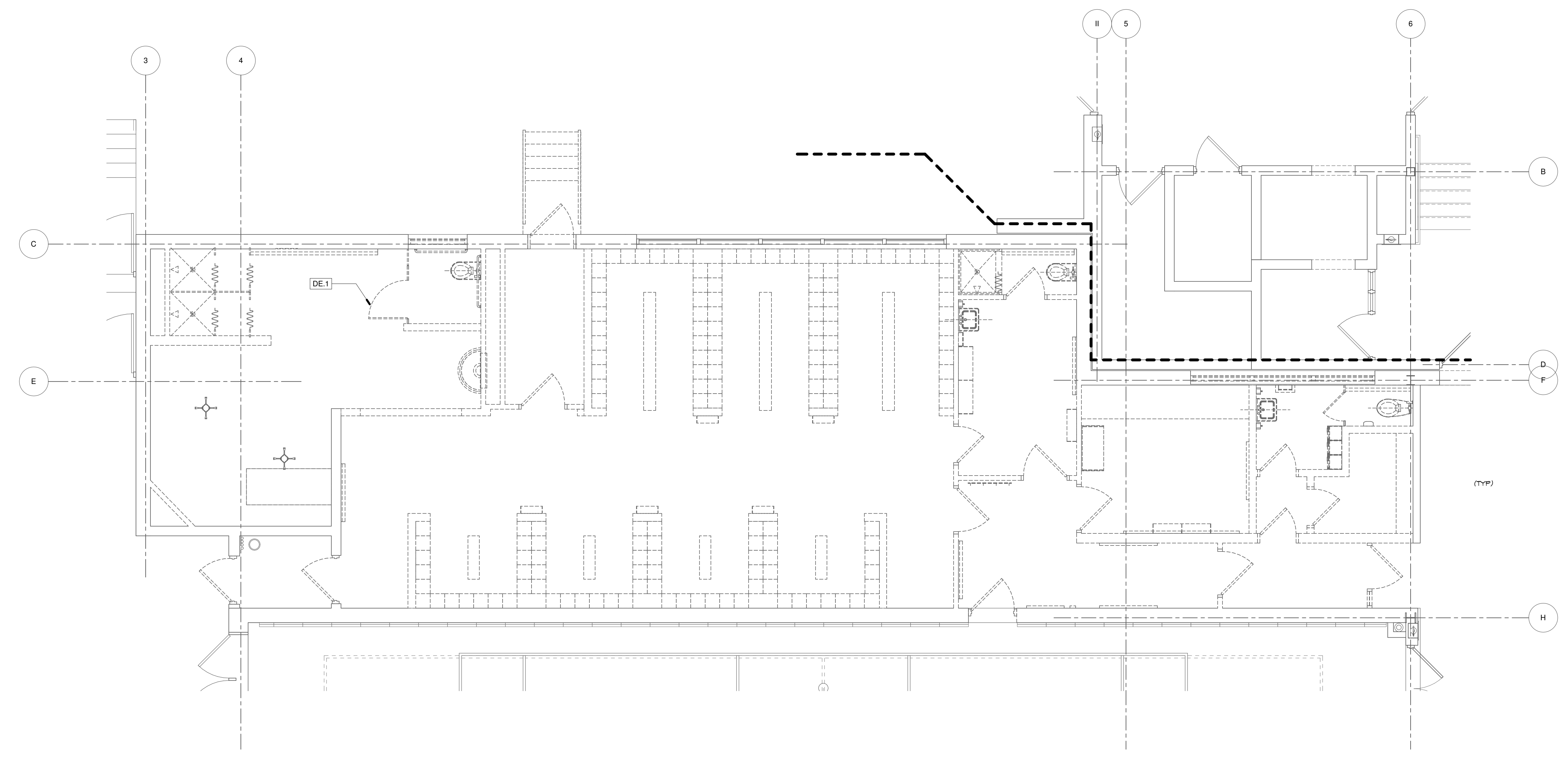
500 SOUTH SALINA STREET
SYRACUSE, NEW YORK 13202

CONSULTANT:

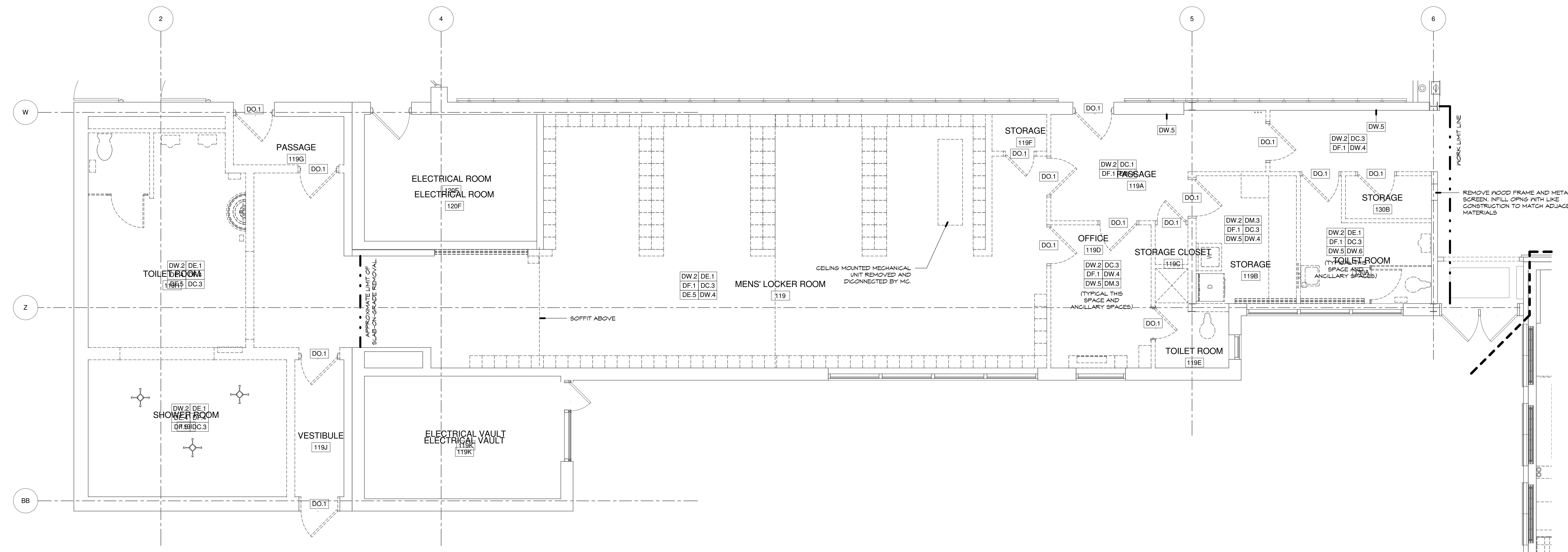
 ashley@mcgraw.com
 jbc@mcgraw.com
 NOT FOR CONSTRUCTION



| NO. | KEYED NOTES DESCRIPTION |
|------|--|
| DC.1 | REMOVE ACOUSTIC PANEL, CEILING SYSTEM, INCLUDING TRIM, HANGERS AND ACCESSORIES. ELECTRICAL DEVICES REMOVED BY THE EC. |
| DC.3 | REMOVE GYPSUM PLASTER CEILING SYSTEM, INCLUDING TRIM, HANGERS AND ACCESSORIES. ELECTRICAL DEVICES REMOVED BY THE EC. |
| DE.1 | REMOVE TOILET PARTITIONS AND ACCESSORIES AS INDICATED. |
| DE.4 | EQUIPMENT/ FUTURE REMOVED BY OTHER PRIME CONTRACTOR(S). |
| DE.5 | REMOVE METAL LOCKERS, FILLER PANELS, BASE AND TRIM. LOCKERS SHALL BE REMOVED FROM SITE FOR REFINISHING, AND REINSTALLED. COORDINATE NEW LOCKER LAYOUT WITH RECONSTRUCTION PLANS. |
| DF.1 | REMOVE RESILIENT FLOORING AND ACCESSORIES (NON-ACM REMOVALS) |
| DF.4 | REMOVE CERAMIC TILE FLOORING AND THIN SET MORTAR TO STRUCTURAL SLAB. |
| DF.5 | REMOVE SLAB-ON-GRADE |
| DM.3 | REMOVE SHELVING, INCLUDING BUT NOT LIMITED TO, FRAMING, SHELF STANDARDS, ANCHORS AND ACCESSORIES. |
| DO.1 | REMOVE DOOR, FRAME AND HARDWARE |
| DW.2 | REMOVE WALL CONSTRUCTION AS INDICATED. COORDINATE EXTENT WITH RECONSTRUCTION PLAN. |
| DW.4 | REMOVE WOOD BASE, SHOE MOLDING AND QUARTER ROUND. |
| DW.5 | REMOVE PLASTER FINISH TO CMU; PREPARE SURFACE TO RECEIVE NEW SCHEDULED FINISH. |
| DW.6 | REMOVE CERAMIC TILE WAINSCOT |



31 DEMOLITION PLAN AT GIRLS' LOCKER ROOM
1/4" = 1'-0"



51 DEMOLITION PLAN AT BOYS' LOCKER ROOM
1/4" = 1'-0"

HARPURVILLE CENTRAL SCHOOL DISTRICT
 ALTERATIONS AND ADDITIONS PROJECT AT THE
JUNIOR-SENIOR HIGH SCHOOL
 54 MAIN STREET HARPURVILLE, NY, 13787
 SED PROJECT NO.: 03-05-01-04-0-001-014

| Rev. No. | Date | Desc. |
|----------|------|-------|
| | | |

AMA JOB NO. 1152
 CHK'D BY: MAJ
 DRAWN BY: JBC/NRF

ENLARGED PLANS - DEMOLITION

DATE REVISION: OCTOBER 31, 2012

JR/SR
AD-105